

Baa Baa Black Sheep



“Baa baa black sheep, have you any wool?” Bring the classic nursery rhyme song to life with this adorable, and easy to sew, softie. Children will love to hold and play with their very own baa baa black sheep (or white sheep!). You can complete this project in about an hour. A fun birthday or shower gift!

*This is an original sewing pattern by Abby Glassenberg.
Copyright 2016. All rights reserved. It is illegal to distribute this pattern electronically or in hard copy without permission.
Have a question? Email me [mailto:: abbyglassenberg@comcast.net](mailto:abbyglassenberg@comcast.net)*

A finished sheep is 12 inches from head to tail and 8 inches tall.

To make a sheep you'll need:

1/4 yard of gray fleece

1/4 yard of black faux fur

Black embroidery floss or Perle cotton, 18 inches

Fiberfill stuffing, 6 ounces

Coordinating thread

Tools:

Disappearing fabric marker or chalk

Embroidery needle

Notes:

Fleece is stretchy and faux fur has nap. It's important to place the pattern pieces on the fabric with the arrows parallel to the selvedge.

A 1/4 inch seam allowance has been added to all pattern pieces. Cut on the solid lines and stitch on the dotted lines.

For increased accuracy and tight seams that can withstand stuffing use a short stitch length when sewing softies.

CUT EVERYTHING OUT

From gray fleece cut:

- 2 Ears
- 8 Legs
- 2 Faces
- 2 Tails

From black fur cut:

- 2 Bodies
- 2 Ears

Transfer all of the markings to the fabric with a disappearing fabric marker or chalk. Cut the leg slits in both body pieces.

MAKE THE LEGS



Place two leg pieces right sides together. Stitch around, leaving the straight edge at the top open. Repeat three more times so that you have four legs. Clip the curves and turn the legs right side out. Stuff the foot area firmly on each leg, leaving the rest of the leg unstuffed.

MAKE THE TAIL

Place the tail pieces right sides together. Stitch around, leaving the straight edge at the top open. Clip the curves and turn the tail right side out.

MAKE THE EARS

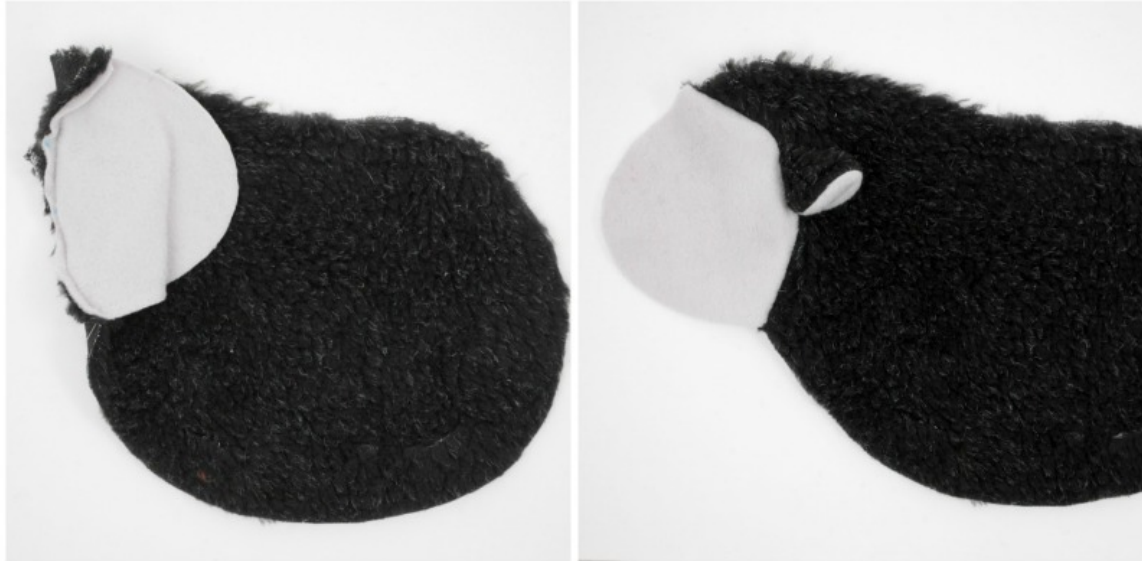


Place one fleece ear and one fur ear right sides together. Stitch around the sides of the ear, leaving the bottom open. Clip the curves and turn the ear right side out. Fold in half along the fold line and pin to hold. Repeat to make a second ear.

ATTACH THE FACE TO THE BODY



Place one folded ear on the right side of one face with the fold of the ear toward the top of the face. Baste in place. Repeat for the other ear and face piece.



Put one face piece on top of the coordinating body piece, right sides together, aligning points A and B. Pin well along this curve. Stitch the face to the body from point A to point B, catching the raw edges of the ear in the seam. Remove the basting stitches from the ear.

Repeat to attach the other face to the other body piece.

ATTACH THE TAIL AND LEGS

Place the tail on the right side of one body piece, matching up points C and D. Note that the tip of the tail is pointing downward. Baste in place.



From the right side of one body piece slide a leg through one of the leg slits so that the raw edges of the leg align with the edged of the slit. Fold the body down over the slit and pin the leg in place. Stitch across the slit, closing it up and catching the leg in the seam. Repeat for the other leg, than repeat twice more attaching the other two legs to the other body piece.

EMBROIDER THE FACE

Thread an embroidery needle with black Perle cotton or 3-strands from a length of black embroidery floss. Tie a knot in the end. Bring the needle up from the back of one face and embroider the eyes, nose, and mouth with chain stitch. Finish the embroidery at the back and tie a double knot to secure. Repeat on the other face piece.



SEW THE BODY TOGETHER

Place the two assembled body pieces right sides together and pin well. Place pins where the face meets the body to be sure that the seams match up exactly. Stitch around the body, leaving the opening as marked. Clip the curves, especially at the neck, and turn the sheep right side out. Stuff firmly. Close the opening with ladder stitch.



Give your sheep a big hug!



For more fun softie patterns, plus tips for running your own creative business, visit my blog whilshenaps.com.

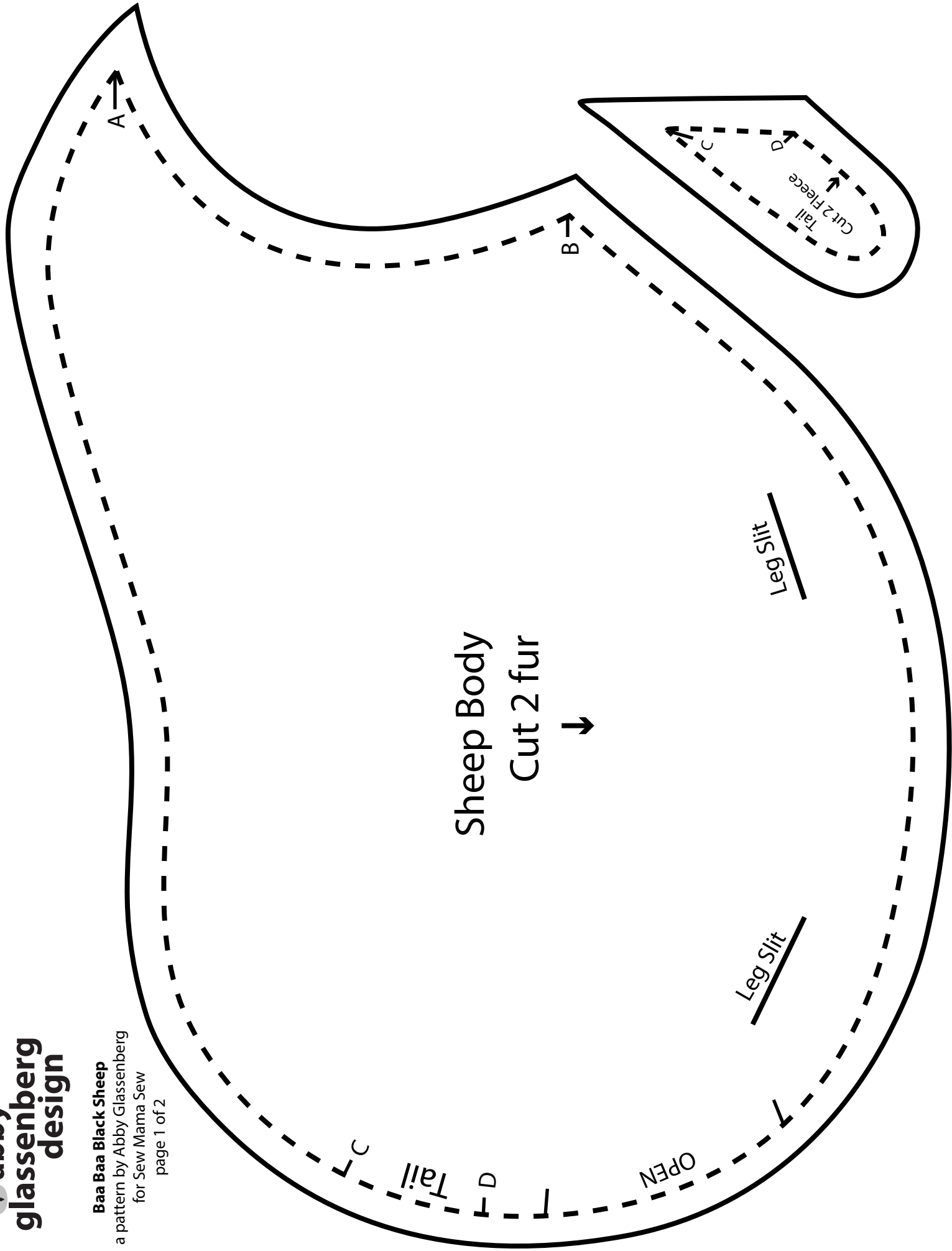
*This is an original sewing pattern by Abby Glassenberg.
Copyright 2016. All rights reserved. It is illegal to distribute this pattern electronically or in hard copy without permission.
Have a question? Email me [mailto:: abbyglassenberg@comcast.net](mailto:abbyglassenberg@comcast.net)*

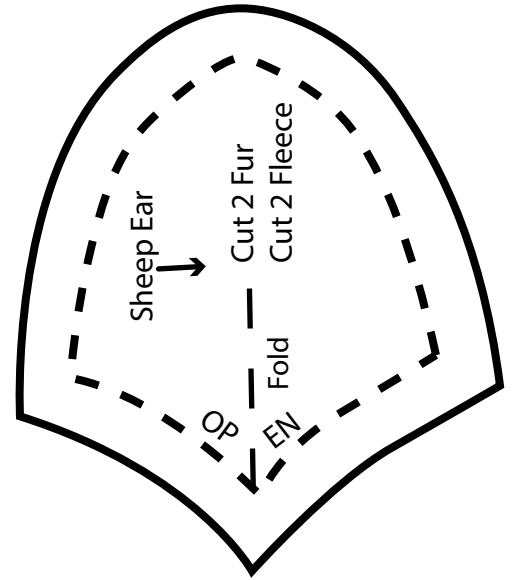
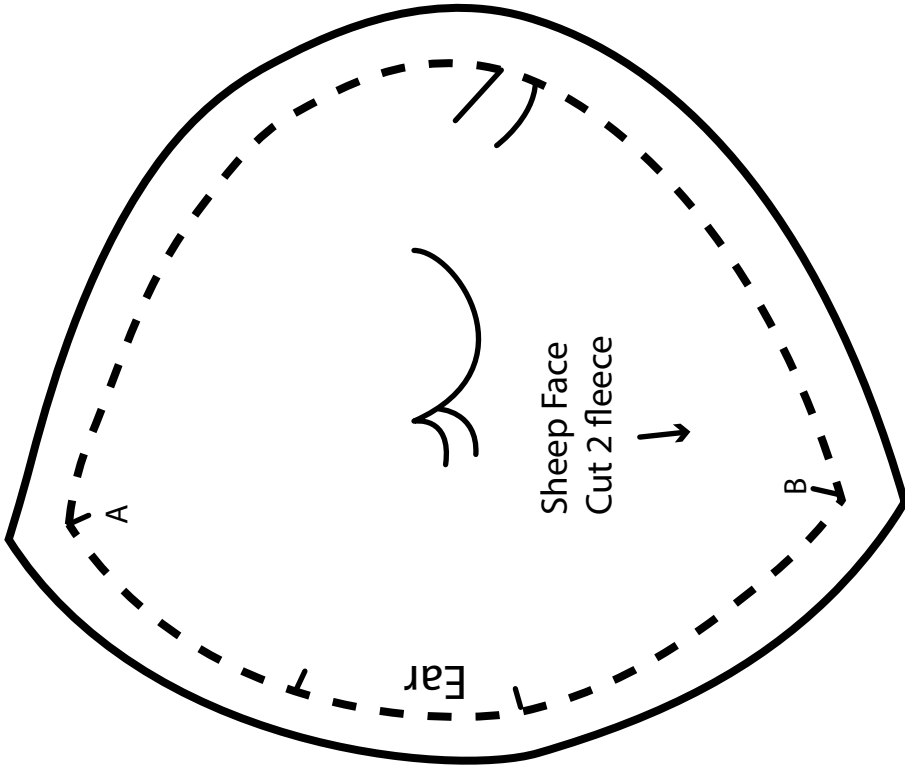
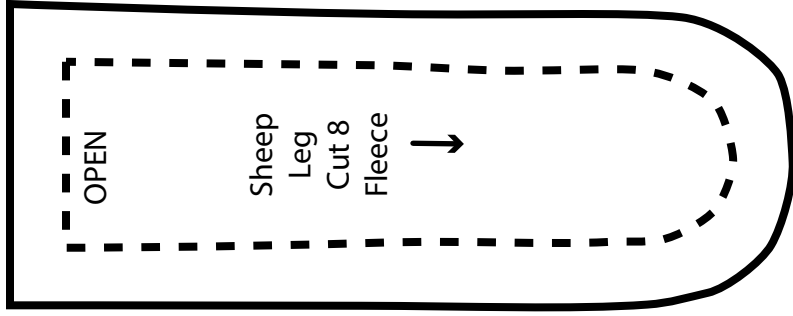
+++++++

Find me online:

Facebook: <http://www.facebook.com/AbbyGlassenbergDesign>
Etsy: <http://www.whilshenaps.etsy.com>
Blog: <http://www.whilshenaps.com>

Thank you!






 abby
 glassenberg
 design

Baa Baa Black Sheep
 a pattern by Abby Glassenberg
 for Sew Mama Sew
 page 2 of 2